

# RES

**ROTATING EQUIPMENT SOLUTION**



<http://r-e-s.co.kr>

# About us

**RES**

**ROTATING EQUIPMENT SOLUTION**

- Rotating Equipment Solution(RES) was established in February, 2016 in Changwon, Korea and We provide total solution for customer requirements for any problems produced while installation, commissioning and operation of rotating equipment for all business area(Oil & Gas, Power, Water) all over the world.
- RES offerings are built into six core groups.

## **Integrated Technical Service**

- Carry over work and Punch clearing work, Repair
- Mechanical & Electrical work
- Portable machining (Turning, Boring, Milling Machine)
- Vibration analysis & solution for rotating equipment

## **Design & Fabrication work**

- Baseplate
- Pipe spool
- Tubing material
- Structure assembly
- 2D, 3D drawing

## **Procurement**

- Spare parts for any vendor
- Any rotating equipment
- Global sourcing for parts
- Mechanical seal, Coupling
- Lube oil system
- ARC Valve
- Special fastener

# About us

**RES**

**ROTATING EQUIPMENT SOLUTION**

- Rotating Equipment Solution(RES) was established in February, 2016 in Changwon, Korea and We provide total solution for customer requirements for any problems produced while installation, commissioning and operation of rotating equipment for all business area(Oil & Gas, Power, Water) all over the world.
- RES offerings are built into six core groups.

## **Manpower**

- Inspector & Engineer
- Supervision (Supervisor, Foreman, Coordinator) for installation & commissioning
- Commissioning personnel (E&I, MC)
- Technicians (E&I, Mechanical, Piping, Welder, Painter, Fitter)
- Document controller

## **Painting, Flushing & Cleaning**

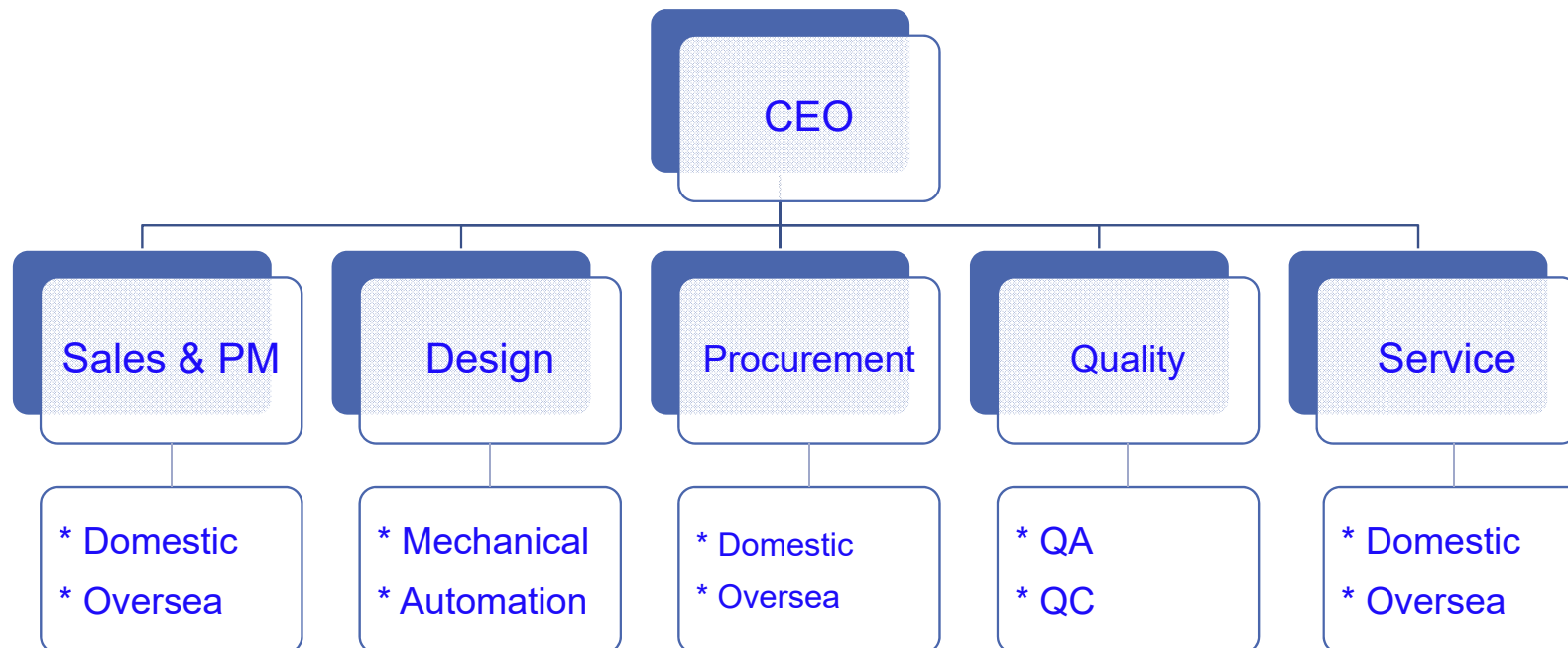
- Chemical cleaning for rust
- Oil flushing
- Blasting
- Painting

## **Industrial Automation**

- Innovative Design
- Consulting for old production line
- Reduction for production cost
- 2D, 3D drawing outsourcing

# Organization

## ■ RES Organization



# Certificate

- **Global Standard Quality Management**
- Due to our increasing international activities, the management decided in 2016 to initiate the certification process.
- ISO 9001 is the internationally accepted standard for quality-management systems.
- The company considers ISO as a useful tool in establishing all aspects of modification, fabrication, procurement for global sourcing, manpower and general service.



**BUREAU VERITAS**  
Certification

**RES**  
203, 3-15-daero, Masanhappo-gu, Changwon-si, Gyeongsangnam-do, Korea

*Bureau Veritas Certification Holding SAS – UK Branch certify that the Management System of the above organisation has been audited and found to be in accordance with the requirements of the management system standards detailed below*

**ISO 9001:2008**

*Scope of certification*

**Repair and service work for rotating equipment at ship building yard and power/petrochemical/industrial plant**

Original cycle start date: **11 January 2017**  
Expiry date of previous cycle: **N/A**  
Certification / Recertification Audit date: **05 January 2017**  
Certification / Recertification cycle start date: **11 January 2017**

Subject to the continued satisfactory operation of the organisation's Management System, this certificate expires on: **14 September 2018**

Certificate No. **10BK01009** Version 1, Revision date: 11 January 2017

*Signed on behalf of BVCH SAS UK Branch*



**UKAS**  
MANAGEMENT  
SYSTEMS

008

Certification body address: **5<sup>th</sup> Floor, 66 Prescott Street, London E1 8HG, United Kingdom**  
Local office: **81102, 223 Teheran-ro, Gangnam-gu, Seoul, Korea**

Further clarifications regarding the scope of this certificate and the applicability of the management system requirements may be obtained by consulting the organisation.  
To check this certificate validity please call: +62 2 567 9001

Page 1 of 1

**ISO 9001**

# Modification work

- **RES provides a wide range of Modification work service including**
  - Carry over work and Punch clearing work, Repair
  - Mechanical & Electrical work
  - Portable machining in site (Turning, Boring and Milling machine)
  - Vibration analysis & solution for rotating equipment



# Design & Fabrication work

- RES provides a wide range of Design & Fabrication work service including
  - Pipe spool
  - Tubing material
  - Baseplate
  - Structure Assembly
  - 2D, 3D drawing outsourcing



# Procurement

**RES**

**ROTATING EQUIPMENT SOLUTION**

- **RES provides a wide range of Procurement service including**
  - Rotating equipment (Motor, Pump, Turbine, Compressor, Engine, Fan, Agitator)
  - Spare parts for any rotating equipment
  - Global sourcing (Casting, Forging, Baseplate & Steel structure, Forged ring, Instruments and etc)
  - Lube oil system, ARC Valve
  - Special fastener



# Manpower

**RES**

**ROTATING EQUIPMENT SOLUTION**

- **RES provides a wide range of Manpower service including**
  - Technicians (E&I, Mechanical, Piping, Welder, Painter, Fitter)
  - Supervision(Supervisor, Foreman, Coordinator) for installation & commissioning
  - Commissioning personnel (E&I, MC)
  - Inspector & Engineer
  - 2D, 3D drawing for fabrication and approval
  - Document controller



# Painting, Flushing & Cleaning

---

- **RES provides a wide range of Painting, Flushing & Cleaning service including**
  - Chemical cleaning for rust
  - Oil flushing
  - Blasting
  - Painting



# Industrial Automation

- RES provides a wide range of Industrial Automation service including
  - Consulting and innovative design for old product line
  - Providing optimized new product line
- You can get many advantage for production time and cost saving



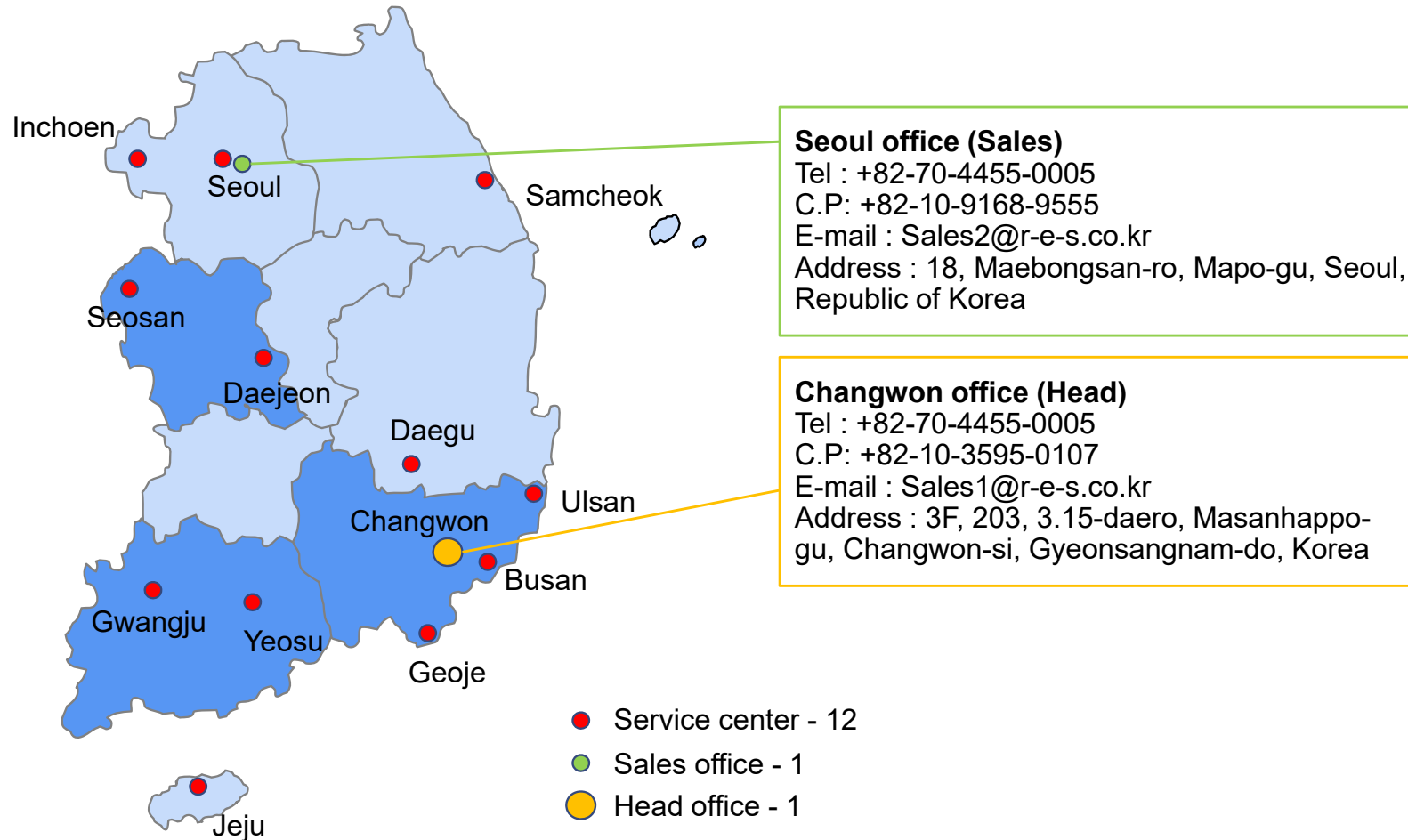
# Performance record

Client	Country	Project	Date	Service
FLOWERVE	Netherlands	DSME / ICHTHYS	Feb. 2016	Punch clearing for piping
PROTEC S.R.L	Italy	DSME / ICHTHYS	Mar. 2016	Inspection for tubing
SULZER	Korea	Gunjang Energy / GE4	Mar. 2016	Punch clearing for motor
SULZER	Germany	SHI / ICHTHYS	Apr. 2016	Punch clearing for seal system
ALDERLAY	United Kingdom	DSME / ICHTHYS	May. 2016	Sourcing for Baseplate, installation, alignment
BUSCH	Norway	DSME / ICHTHYS	Jun. 2016	Punch clearing for tubing
HHI	Korea	S-Power / Ansan CCPP	Jun. 2016	Punch clearing for motor
PROTEC S.R.L	Italy	DSME / ICHTHYS	Jun. 2016	Punch clearing for tubing
FLOWERVE	Netherlands	DSME / ICHTHYS	Jul. 2016	Punch clearing for seal system
FLOWERVE	Netherlands	DSME / ICHTHYS	Sep. 2016	Sourcing for Tubing material
INPEX	Australia	DSME / ICHTHYS	Sep. 2016	Punch clearing for motor
SULZER	United Kingdom	SHI / MARTIN LINGE	Oct. 2016	Punch clearing for electric instruments
SULZER	Korea	SAFCO	Oct. 2016	Punch clearing for motor
SULZER	United Kingdom	SHI / EGINA	Dec. 2016	Punch clearing for electric instruments
BUSCH	Norway	DSME / ICHTHYS	Dec. 2016	Repair for mechanical seal of MEG Vacuum Pump
INPEX	Australia	DSME / ICHTHYS	Dec. 2016	Portable machining for baseplate of return water pump in site

# Network of service location

**RES**

**ROTATING EQUIPMENT SOLUTION**





**THANK YOU!**